

**“Life is better at the lake”**



## Highland Lake Property Owners Guide

Presented by the HLWA

This guide is for you, the homeowners of Highland Lake. As a lake homeowner, you play the most important role - caretaker of Highland Lake. Being a responsible caretaker will help safeguard Highland Lake from deteriorating into a lake that is less healthy and less enjoyable. A beautiful, healthy Highland Lake can preserve the significant investment you made in your home. The Highland Lake Watershed Association (HLWA) prepared this owners guide for you; it includes important information about property ownership, rules and regulations, and suggestions for making the community enjoyable for everyone. The association is led by a volunteer Board of Directors and additional volunteers working together to address issues related to Highland Lake. We are a grassroots organization that provides the coordination necessary to monitor and protect Highland Lake.

**OUR MISSION** is to encourage the restoration and conservation of the natural resources of the Highland Lake watershed as well as to protect and conserve fish and wildlife, forest and other plant life, water sources and soils. We promote the understanding among citizens of the Town of Winchester of the need for such restoration and conservation to provide a legacy for the future.

Visit our website at [www.hlwa.org](http://www.hlwa.org) for more information

### Contact us:

Email: [hlwa@hlwa.org](mailto:hlwa@hlwa.org), Mailing: PO Box 1022, Winsted CT 06098-1022

Follow HLWA



#hlwainsta

---

## The Highland Lake Property Owners Guide for Highland Lake Residents

---

### Highland Lake Watershed Association (HLWA)

HLWA roots go back to 1959 when lake residents were concerned about the control of the lake water level which was used for hydropower. It took 20 years, but in 1980 the Town of Winchester bought the water rights. Fast forward to 1993, when a new and separate association called **The Highland Lake Watershed Association, Inc.**, a 501(c)(3) nonprofit, was formed.

Over the years, the association has been instrumental in support of initiatives that provide a positive impact on water quality, including the sewer system all around the lake, protecting forested land in the watershed, and water testing. HLWA continues to advocate for the health of Highland Lake as it faces ongoing challenges.

---

### What Does HLWA Do?

- Works with local authorities to monitor water quality and safety which benefits all residents.
- Conducts monthly water sampling and testing April through November.
- Analyzes water quality studies, effectiveness of weed treatments and drawdowns by working with a professional limnologist.
- Raises money to protect and preserve water quality and the natural resources of the watershed.
- Manages our Legacy Program which acquires land in the watershed to preserve open space and reduce water runoff.
- Sponsors events like "Evening on Highland Lake," Boat Parade, Meet the Board.
- Holds an annual membership meeting in July.
- Supports the efforts of the Winchester Police Department Marine Patrol to uphold safety on the water.
- Organizes cleanup campaigns to pick up trash from lakeside roads.
- Educates, informs and updates area residents with Highland Lake News, website, Facebook, Instagram and email.
- Remains open to new ideas that will help HLWA continue to fulfill its mission.
- Participates in local philanthropic events.

### Benefits of HHLA Membership

- Protect your investment and enjoyment by conserving some of the best lake water in Connecticut.
- Help make a difference and improve the quality of life around the lake.
- Meet your neighbors and make new friends.
- Participate in special events where you can socialize and exchange ideas while supporting the focus and mission of HHLA.
- Learn what keeps a lake and watershed clean, healthy and conducive to many more years of beauty and enjoyment.

### Lake-Friendly Tips



Plant and maintain trees, plants and shrubs near the lake to prevent erosion and serve as filters.



Do not bathe or wash objects in or near the lake – especially with toxic cleaners, soaps or phosphorous-containing detergents.



Don't feed the geese or ducks as their waste contains nutrients that support the growth of aquatic weeds and algae.



Pick up your pet waste – like fertilizers, the nutrients from pet waste can wash into storm drains, streams and the lake after it rains, not to mention the bacteria and other pathogens found in pet waste!



Recycle or properly dispose of household chemicals, waste and harmful vehicular fluids so they don't end up in our lake.



Do not put lawn clippings or leaves in the lake and, if possible, remove leaves from the lakebed in the fall. Be sure to mention this to your lawn service.



Clear storm drains of debris/leaves near your house.



Divert runoff from boat launches or other lake entries.



Take your car to a car wash. If you must wash your car or boat yourself, do not wash it on an impervious driveway. Instead, wash it over the lawn, away from the lake, so the ground can absorb more of the phosphorous and/or chemicals. Don't use products like tire shine that have warning labels not to use in watersheds.



## Suggestions to Making Your Property “Lake Friendly”



There are many things you can do to make your property lake friendly. Stormwater runoff contributes to excessive aquatic growth and algae blooms, decreased water clarity and shoreline erosion. Stormwater carries with it nutrients from fertilizers, pesticides and sediment, among other things. Water can build in both volume and speed as it runs downhill, causing further erosion. Properly dealing with and trying to prevent stormwater runoff are important lake protection measures.

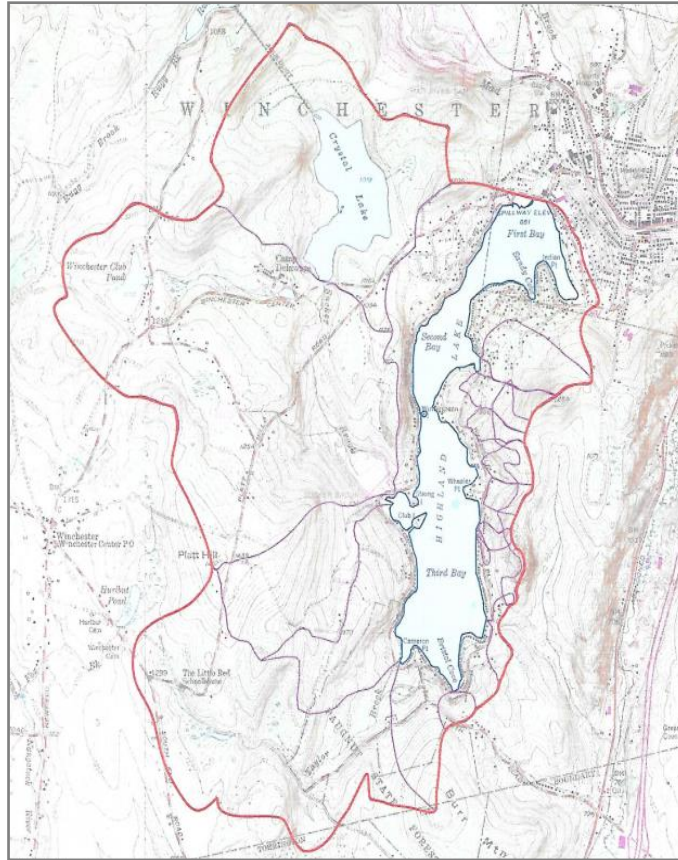
- **Create Buffers** – A buffer, or “riparian buffer,” is a strip of land (with vegetation such as plants, shrubs and trees) along the shoreline separating your lawn from the water. This strip of land helps to stabilize the shoreline and prevent erosion while catching runoff from your lawn. It will help to absorb things such as fertilizers and pesticides and trap sediment before it can enter the lake. In addition, it also provides habitat for birds and other small wildlife while acting as a barrier to nuisance Canada geese who may fear a predatory animal is hiding in there.
- **Install Rain Gardens/Rain Barrels** – A rain garden is a depression in the ground, filled with plants and shrubs, that acts to catch runoff from rooftop downspouts, driveways, etc. The depression fills with the water, so it doesn't run down the property, and the water is absorbed into the soil and used by the plants. A rain barrel would also collect rooftop runoff from downspouts; however, rain barrels collect and hold the water for such things as gardening and watering other yard plants.
- **Reduce Impervious Surfaces** – Impervious surfaces such as rooftops, asphalt driveways and sidewalks don't absorb stormwater. Instead, it runs down those surfaces, building in speed and volume. Reducing the amount and effects from impervious surfaces is important. One such way is to reduce the overall impervious surface totals on one's property. Replacing an asphalt driveway or cement walkway with a more porous surface, such as block or crushed stone, is one such method. Pervious (or porous) surfaces should be maintained by removing the surface of sediment buildup on a periodic basis.
- **Less Lawn, More Native Plants** – Replace lawn with native plant, shrub and tree cover on your property. Their roots help to stabilize the soil, preventing erosion, and they help to filter runoff of nutrients and sediment before it enters streams, storm drains and the lake. Additionally, native plants, shrubs, trees and grasses are better suited to the conditions found in Connecticut and can survive without needing additional water or a lot of inputs such as fertilizer.
- **Ensure Proper Lot Drainage** – By adding culverts, diversions, ditches, sump pumps, etc., where necessary, you can help to prevent erosion and encourage infiltration of runoff into soil.
- **Utilize Twisting, Narrow Paths** – Long straight paths and walkways that lead down a hill (and especially towards the lake) act as direct water chutes into the lake, carrying nutrients, sediment and debris with the water. By creating a narrow, twisting path, the water won't have a straight run into the lake and instead it will encourage infiltration of the runoff into the soil.

---

## The Highland Lake Property Owners Guide for Highland Lake Residents

---

### Preserving the Waterbodies



The watershed of Highland Lake encompasses approximately 4,000 acres (outlined in red) and includes the land surrounding Highland Lake, Crystal Lake and Winchester Club Pond. These bodies of water are connected by Sucker Brook, Taylor Brook and smaller ponds. The quality of the water in these bodies of water is largely determined by the materials carried over the land surface, by underground water, and by tributary streams. This large network of waterbodies, all located in the Town of Winchester, are monitored and maintained by the town as well as the State of Connecticut's Department of Energy and Environmental Protection (DEEP).

Particles of sand and other materials flow off the watershed into the lake carrying nutrients and settle to the bottom as sediments. Sediments make the lake shallower and cause the water to decline in clarity and quality.

Watershed management is largely concerned with the amount of phosphorous, nitrogen, and sediment which is washed off the watershed into the waterbodies it surrounds.

Phosphorous and nitrogen are the two most harmful nutrients which wash off the watershed into the lake. They cause aquatic weeds and algae to grow which reduces the oxygen and quality of the water and may cause odors due to the decomposition of aquatic weeds (which reduces oxygen, and lack of oxygen affects fish survival). In addition, the weeds can be a nuisance to many people who enjoy the water.

*We ask for your cooperation to be "lake friendly" and do whatever you can to help preserve our watershed.*

## Boating Regulations

The waters of Highland Lake and the Public Boat Launch at Highland Lake are regulated by the Connecticut Department of Energy & Environmental Protection (DEEP). Boating regulations are enforced by the Winchester Police Marine Patrol and State Environment Conservation Police (ECON). For an emergency on the lake, dial 911. The number to call ECON directly is 860.424.3333.

**Please be sure to familiarize yourself with all of the DEEP Boating Regulations regarding boating and safety when enjoying Highland Lake!**

[https://portal.ct.gov/-/media/DEEP/Boating/boating\\_guide/part3pdf.pdf](https://portal.ct.gov/-/media/DEEP/Boating/boating_guide/part3pdf.pdf)

- No person shall operate a **MOTORBOAT**, excluding a personal watercraft, at a speed in excess of **Slow-No-Wake within 100 feet of shore, or a dock, pier, float or anchored or moored vessel**, unless taking off or landing a waterskier.
- No person shall operate a **PERSONAL WATERCRAFT (PWC)** at a speed in excess of **Slow-No-Wake within 200 feet of shore, or a dock, pier, float or anchored or moored vessel**, unless taking off or landing a waterskier.
- When within 100 feet of buoys marking a restricted swimming area or boat access area, vessels shall be operated at Slow-No-Wake.
- Water Jet Packs or Flyboards (JAV) are not allowed in a Slow-No-Wake area or within 200 feet of any dock, shore, pier or fixed structure or within 100 feet of any vessel except to transit the area: **NO TRICKS ALLOWED!**
- Depending on the type of vessel that is being operated, a waterbody (or portion of waterbody) may simply be too narrow to legally waterski or go fast.

**NOTE: On Highland Lake, the narrows between 2nd and 3rd bay is Slow-No-Wake for PWCs, and some coves are too narrow for boats to make fast turns when pulling a skier or a tube.**

---

## Safety on Your Boat or PWC

- Remember to carry on your boat at all times: your Safe Boating Certificate or Certificate of Personal Watercraft Operation, a flare, horn or whistle, a paddle, life jackets for the number of people on board, and a fire extinguisher.
- USCG-approved Personal Flotation Device (PFD) must be worn by:
  - Children under the age of 13 when the vessel they are aboard is under way
  - Anyone operating or riding on a PWC
  - Anyone pulled by a boat
  - Anyone in a manually propelled vessel from October 1 through May 31
- Be aware of age restrictions for driving a boat or PWC or serving as the observer for a vessel engaged in all water sports.

**No person** may operate a boat while under the influence of alcohol or drugs.

Town Ordinances

- **6 mph LIMIT FROM 5:00 p.m. SUNDAY to 1/2 hour before sunrise on Monday** (Sunday before Memorial Day to Sunday preceding Labor Day).
- **6 mph** limit from 1/2 hour after sunset to 1/2 hour before sunrise.
- 45 mph limit on Saturdays, Sundays, and holidays.
- **Boats greater than 22 feet in length and pontoon boats greater than 30 feet in length are prohibited.**
- NO staging of personal watercraft, motorboat or waterskiing activities from town-owned beaches or park.
- Overnight mooring prohibited.

Visit [www.townofwinchester.org](http://www.townofwinchester.org) for additional town ordinances.

**Wake Responsibly:** You are responsible for your own wake. Be courteous.

- Stay at least 200 feet away from the shoreline, docks, or other boats.
- Minimize repetitive passes on any one portion of the lake.
- Keep music at reasonable levels.



Safety is up to you! Fines Enforced.

---

*The Highland Lake Property Owners  
Guide for Highland Lake Residents*

---

**Be a Good Neighbor!**



Consider notifying your neighbors if you are having a large party; better yet, invite them to join you!



Have guests park so they *don't block neighbors' driveways*.



Starting a bonfire? Check the wind. Neighbors *may not want your smoke in their house!*



End loud parties, noise or conversations at a reasonable hour – *remember, sound travels!*



Remember that *Police enforce Connecticut fireworks laws*.



Control your pets from excessive barking; respect leash laws.



Clean up after your pets – it keeps bacteria out of the lake.



*Don't feed the geese or ducks* – bread is unhealthy for them – their droppings are unhealthy for you, your property and the lake!



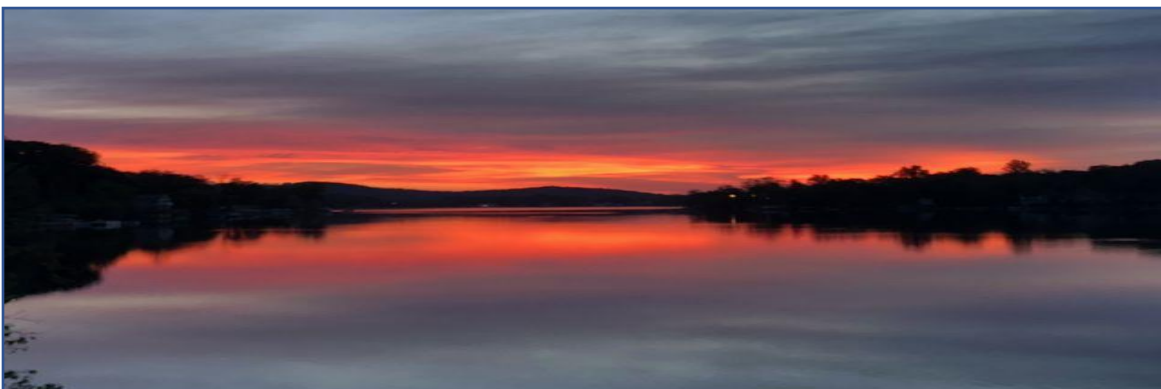
Use power tools and mowers 7:00 a.m. – 9:00 p.m. Monday – Saturday, 9:00 a.m. – 9:00 p.m. Sunday and holidays (town regulations).



Keep grass clippings, leaves and yard debris *out of the water* – they contribute to weed growth and will float to your neighbor's property!



Respect *speed limits* when driving your car – people are out for walks and bike rides.





---

## The Highland Lake Property Owners Guide for Highland Lake Residents

---

### Town of Winchester

#### Assessor's Office

The Assessor's Office is responsible for maintaining and creating the annual grand list. The list includes real property, personal property, and motor vehicles. All assessments are at 70% of its value in accordance with provisions of the Connecticut General Statutes. Taxes are based on the assessment times the mill rate. The 2019 grand list mill rate is 33.54 mills. (Example: \$1,000 assessment x mill rate .03354 = \$33.54 annual taxes). Contact the Assessor's Office at 860.379.5461 or [assessor@townofwinchester.org](mailto:assessor@townofwinchester.org).

#### Fire Services

The Winsted Fire Department is housed in three stations strategically placed within the town for quick emergency response. The Fire Departments assist the residents of the community with fire suppression operations, hazard materials response, water rescue, confined space rescue, vehicle extrication, fire inspections, fire prevention activities and other incidents which require Firefighter response. **The department has a rescue boat which can be used with emergencies when the lake is frozen.** The Support Services Division of the Winsted Fire Department provides opportunities for individuals who chose not to or are unable to become Firefighters to become involved in volunteer activities to support the department. This Division supports the department with fund raising, community activities, and with non-Firefighting responsibilities at major incidents. In case of emergency, please dial 911. Contact the Fire Chief at 860.379.5155.

#### IWWC

The Inland Wetlands and Watercourses Commission (IWWC) is responsible for regulating and permitting activities most ground disturbances within 100 feet of Highland Lake and other wetlands and watercourses within the Town of Winchester. Before any modification is made to any property within 100' of the lake, you should have a conversation with the Town's Planning Department/IWWC Agent to understand if your activity requires a permit. **Examples of regulated activities that require a permit include: lake wall construction, modification or repairs; decks and fences; stump removal; home additions; and sheds, porches, patios, steps or walkways. Taking down trees at Highland Lake can sometimes be prohibited. Before you remove trees or stumps, check with the IWWC agent.**

Additionally, the IWWC is responsible for regulating and permitting activities that fall under the Town *Dock and Mooring Ordinance Sec 162*. This ordinance regulates docks, swim floats, boat lifts, walkways, personal watercraft lift/floats, mooring buoys and markers at public bodies of water within the town. If you plan to make any changes including maintenance to items covered by this ordinance, contact the Planning Department or IWWC Agent. This ordinance helps to maintain consistency and safety for all owners of abutting properties as well as protect the water quality of Highland Lake. **Only authorized docks, swim floats, boat lifts, walkways, personal watercraft lift/floats, mooring buoys and markers may be installed and registered with IWWC.**

There is a filing fee for permit applications along with a checklist on what information the IWWC seeks in their review. Residents are encouraged to apply **well in advance** of planned development activity. The IWWC meets monthly to review applications and gather details from applicants. The process can take two or more meetings. Sometimes a public hearing and/or cash bond is required. Regulated activity conducted without a permit could result in a Cease and Desist Order and/or a fine. The IWWC page on the Town of Winchester website provides helpful links to the ordinances and applications (<https://www.townofwinchester.org/inland-wetlands-and-watercourses>). Contact the IWWC at 860.738.6593.

---

## *The Highland Lake Property Owners Guide for Highland Lake Residents*

---

### **Planning and Community Development**

The Planning and Community Development Department provides town planning, environmental planning, development review and permitting associated with residential, commercial, industrial and governmental land use projects. Management and support services are provided to the Winchester's Planning and Zoning Commission, the Inland Wetlands and Watercourses Commission, the Zoning Board of Appeals, as well as the Economic Development Commission. This department also includes the Building Official and Fire Marshal, who conduct project-oriented and routine inspections of buildings within the town's limits in an effort to guard the safety and wellness of all our residents. Contact the Department at 860.738.6593.

### **Police Services**

The mission of the Town of Winchester – City of Winsted Police Department (WPD) is to deliver professional, courteous and efficient police services to the citizens and visitors of our community. Winchester Police Marine Patrol enforces DEEP Boating Regulations on Highland Lake. In case of emergency, please dial 911 immediately. The non-emergency number is 860.379.2721.

The Police Department has a Vacation House Check program. When you are planning to be out of town or away from your home for a period of time, you can fill out the Residential Security Check Application Form and Information Guide, located in the main lobby of the WPD, to request a vacation house check. The WPD will periodically check your house and have your contact information on file in case of an emergency. For security reasons, only hand-delivered requests with photo ID will be accepted at the WPD. Requesting a vacation house check does not guarantee a burglary or other crime will not occur at your residence, and it is only intended to be a request for the WPD to check your home periodically, based upon the availability of an officer.

### **Public Works**

The Department of Public Works is responsible for the construction, maintenance, and repair of public streets, drainage systems and bridges, water source and distribution systems, sanitary sewage collection and disposal systems, cemeteries and trees, and parks. Contact the Director of Public Works at 860.379.4070.

### **Recreation**

All are welcome and encouraged to sign up for recreational programs by visiting the website at <https://winstedct.myrec.com/info/default.aspx>. The Department is always looking to start new programs and classes. If you would like to start or teach a class, or if you have questions about current offerings, please contact the Recreation Director at 860.738.6964.

### **Registrar of Voters**

The primary functions of this office are voter registration and party enrollment. This office supervises all elections, primaries, and referenda and maintains accurate records of names and addresses of all voters in the Town of Winchester.

To register to vote, one must be a U. S. Citizen; a resident of Winchester; at least 17 years old (must turn 18 before election day); and have completed confinement and parole, if previously convicted of a felony. A registered voter may enroll in any party that he or she chooses or may register as an unaffiliated voter. You can register in-person or online. Full-time registered voters can vote in elections and budgets. Property owners can vote in budgets and referendums. Contact the Registrar office at 860.379.2714 or [registrar@townofwinchester.org](mailto:registrar@townofwinchester.org)

### **Senior Services**

The Winsted Senior Center is located at 80 Holabird Avenue. The mission of the Center is to provide a welcoming place for members to gather to ensure a community of happy, healthy and safe adults age 55+. Membership dues are \$6 for the year and 85+ is free. The Center publishes a monthly newsletter that lists all the programs and services offered along with the menu for the daily lunch program. The newsletter is available at the Center and Town Hall, town website, by email or it can be mailed to your home for a fee. Contact Senior Services at 860.379.4252.

---

## The Highland Lake Property Owners Guide for Highland Lake Residents

---

### Tax Collector

Real estate taxes (of more than \$100) for the Town of Winchester, CT are payable in two installments on July 1 and January 1. Motor vehicle taxes are due July 1, unless you register or purchase a vehicle after the October 1 assessment date - then you will have a supplemental motor vehicle tax due January 1. If you have water and sewer through the town, those bills are due quarterly on August 1, November 1, February 1, and May 1. Some residents in the Highland Lake area also have a sewer assessment bill which is due April 1. Contact the Tax Collector at 860.379.4474.

### Town Clerk

The Town Clerk is the keeper of records for the Town of Winchester. All land records such as deeds to your property, mortgages, recorded surveys and all legal documents pertaining to your property are filed here. All minutes for public boards and commissions are recorded here and on the website [townofwinchester.org](http://townofwinchester.org).

Other services include:

- ~ Dog licenses renewed in June with proof of up-to-date rabies vaccine. A new dog can be licensed anytime during the year.
- ~ Absentee ballots for all elections - Federal, State, and Local.
- ~ Sale of hunting and fishing licenses to all Connecticut residents.
- ~ Marriage licenses to anyone planning to be married within the town's borders.
- ~ Certified licenses to anyone planning to be married within the town's borders.

We are known as the gateway to the town by providing information regarding the services offered by the town to our residents. Contact the Town Clerk at 860.738.6963.

### Town Manager

The Town Manager is appointed by the Board of Selectmen to serve as the Town of Winchester's Chief Executive Officer. The town includes both the subsections of Winchester Center and Winsted. The Town Manager's Office oversees all other town departments and is generally responsible for managing the daily operations of the town and implementing policies adopted by the Board of Selectmen. Contact the Town Manager at 860.379.2713.

### Water Level Committee

The water level of Highland Lake has been controlled by the Town of Winchester since 1980. New data from lake reports over the past drawdowns is analyzed by the town Water Level Committee. After careful review of the information, the committee recommends a new drawdown schedule to the Board of Selectmen. The Board of Selectmen approves the schedule and applies for the necessary permits. The current drawdown schedule is posted on the town's website (Planning Dept. - Inland Wetlands Permits) or HLWA's website.

Use this link to access historical data and reports regarding Highland Lake such as drainage studies, drawdown studies, water quality reports, dredging report and more.  
<https://www.townofwinchester.org/planning-community-development/pages/highland-lake-studies-and-report>



---

## The Highland Lake Property Owners Guide for Highland Lake Residents

---

### Winsted Sewer Commission

In the early 1990s it was decided to install a sewer system around Highland Lake to help improve the water quality. The system would tie into the existing main sewer lines and treatment plant in the town. This led to the creation of the "Highland Lake Sewer Service Area" which would basically include all lots located between Wakefield Boulevard and Highland Lake as well as all lots within 300 feet of Wakefield Boulevard on the opposite side from Highland Lake.

The Water Pollution Control Authority (WPCA) decided on a low-pressure sewer system (LPSS). In a LPSS, each residence is essentially a sewer lift station with its own holding tank, grinder pump and control panel. Piping from the building to the holding tank must permit for gravity flow and is the property owner's responsibility to maintain and repair if necessary. The control panel along with the alarm and power supply cables which run from the panel to the tank must be energized and maintained at the property owner's expense. The holding tank, grinder pump and pressure line which runs from the tank to the low pressure main in the street are owned and maintained by the town; however, any damage to these appurtenances caused by the use of prohibited substances or physical contact will be repaired by the town at the homeowner's expense. NOTE: In the event of a power outage, limit water usage as much as possible.

Each pressurized sewer lateral is outfitted with a check valve and a curb stop isolation valve. The check valve allows effluent to flow from the pump to the sewer main but not in the opposite direction, and the curb stop isolation valve allows for each individual house to be isolated from the rest of the system. These appurtenances are owned, operated and maintained by the town.

The low-pressure main which runs under Wakefield Boulevard varies in size from 1 ¼" PVC to 5" PVC and is equipped with isolation valves, air relief valves as well as bypass valves, most of which are in manholes under Wakefield Boulevard; the town also owns and maintains all of these items.

To avoid blockage and damage to the pump, the following items should NOT be placed into any sewer system: Glass. Metal. Abrasive materials including gravel, sand, and coffee grinds. Seafood shells. Socks, rags or cloths. Plastic. Sanitary napkins or tampons. Disposable diapers. Kitty litter. Explosives. Flammable materials. Lubricating oil, grease, paint, cooking oil. Strong chemicals. Gasoline. Stormwater runoff. Personal wipes and other products marked "flushable."

The Water Sewer Commission is independent from town government, and the commission sets rate payer fees.



**What to do if the sewer alarm sounds.** Turn off the sound by pressing the silence button underneath the alarm panel. Limit water usage. If the alarm light is still active after an hour, call Winsted Water Works at 860.379.4101.

Register to receive informative and important updates from the Town of Winchester. To register, visit <https://www.townofwinchester.org/subscribe> and complete the form. Specify what information you would like to receive, including urgent updates.

---

## The Highland Lake Property Owners Guide for Highland Lake Residents

---

### Membership & Donations

Your membership and additional donations are crucial to helping HLWA in our mission to protect Highland Lake and its watershed. Property owners in the Highland Lake watershed are eligible for voting membership. Others who wish to support the mission of the association are eligible to join as an Associate Member.

- Dues and donations paid to HLWA qualify for IRS consideration as a contribution to a charitable organization and may be tax deductible.
- Membership is renewed annually, and fiscal year runs from January 1 to December 31.

#### To become a member and/or donate:

- Visit our website [HLWA.org/membership/](https://hlwa.org/membership/).
  - Click on the blue "membership form" button to download and print a membership form. OR email us at [hlwa@hlwa.org](mailto:hlwa@hlwa.org) and we will send you a membership form.
- To pay/donate by PayPal, visit our website [hlwa.org/donate/](https://hlwa.org/donate/).  
To pay/donate by Venmo, send to **@HighlandLakeWatershedAssociation**.

---

### HLWA Volunteers

HLWA is an all-volunteer nonprofit organization, and we need your help. Volunteers do a myriad of activities including water sampling collection; stewarding the approximately six acres of HLWA-owned forested land; planning events; writing newsletter articles; road trash cleanups; serving on the Board of Directors; and more.

To learn more about how you can get involved, email [president@hlwa.org](mailto:president@hlwa.org).

---

### Volunteer in Support of our Town

Highland Lake residents provide invaluable assistance to the town's boards, commissions, and volunteer agencies. Currently residents serve at the Senior Center, Open Door Soup Kitchen, Inland Wetlands, Zoning Board of Appeals, Board of Selectmen, Friends of Main Street, Planning & Zoning, etc. (see town's website - Boards & Commissions). If you are interested in contributing, please contact the Town Manager's administrative assistant at 860.738.6962.



---

*The Highland Lake Property Owners  
Guide for Highland Lake Residents*

---

Community Directory



Ambulance 860.738.9267  
Animal Control 860.379.2721  
Beardsley Memorial Library 860.379.6043  
Building Department 860.379.8818  
Dog License 860.738.6963 (x 341 or 342)  
Emergency 911  
Fire Department 860.379.5155  
Hartford HealthCare Emergency 860.738.6650  
*(80 South Main Street, Winsted)*  
Inland Wetlands & Watercourses Agency 860.738.6593  
Poison Control 800.222.1222  
Police Department 860.379.2721  
Public Works 860.379.4070  
Post Office 860.379.6675  
Senior Center 860.379.4252  
State Environmental Conservation Police (ENCON) 860.424.3333  
Tax Collector 860.379.4474  
Tax Office 860.379.5461  
Town Clerk 860.738.6963  
Town Manager 860.738.6962

Follow HLWA



#hlwainsta

Membership in HLWA is voluntary, and we hope you will join HLWA and become involved.